



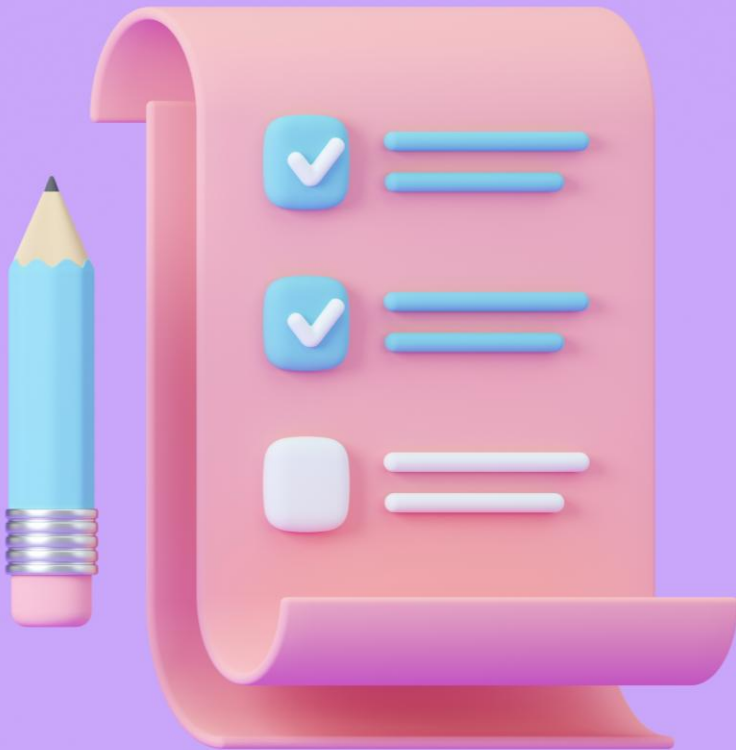
Simtech
Solutions

Santa Clara County Point-in- Time Count 2025

COMMUNITY MEETING UPDATE
JANUARY 10, 2025

Today's Agenda

2

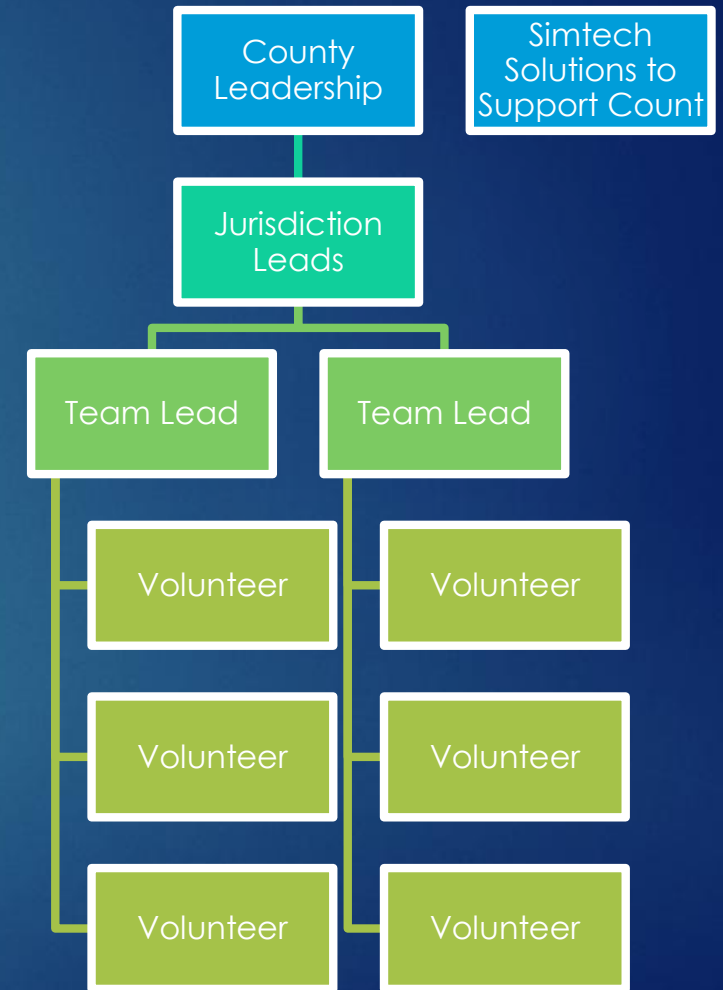


- ▶ Brief Overview of the Process for the Point-in-Time Count for 2025
- ▶ Brief Review of Methodology
- ▶ Volunteers Needed!
- ▶ Known Locations
- ▶ Training Reminder
- ▶ Q&A

What to Expect for the Unsheltered PIT Count 2025

The 2025 Point-in-Time Count Process Overview

- ▶ Leadership and Flow of Information
- ▶ Roles & Responsibilities
 - ▶ [Jurisdiction Leads](#), [Team Leads](#), [Surveyors](#), [Non-Surveyors](#), Simtech Solutions
- ▶ Identifying Locations Ahead of Count
- ▶ Meeting Up with Your Team at your Deployment Center on Count Days
- ▶ Conducting Surveys on Count Days
- ▶ Data Review/Cleanup During and After Count
- ▶ Compile Results for HUD
- ▶ Release Official Report & Interactive Dashboard for CoC Including Jurisdiction Level Information
 - ▶ [Report Sample](#) from Alameda County
 - ▶ [Dashboard Sample](#) from Alameda County



Reminder: Download the Counting Us Mobile App

5

Step 1: Register As a Surveyor

Everyone providing Known Location data MUST register for an account using the *Surveyor Registration Portal*.

Visit santaclara.pointintime.info or scan the QR Code to the right with your mobile device.

After registration, you will receive a confirmation email and directions to set a password to your account.

Surveyor
Registration
Portal



Step 2: Download the App

Scan the QR Code to the right, visit the directly link, or search for *Counting Us* in your device's App Store.

Google Play:

https://bit.ly/Counting_Us_Google



Apple Store:

https://bit.ly/Counting_Us_Apple



Brief Methodology Review

2025 Methodology

7

▶ Previous Methodology

- ▶ Observations and Sampling
 - ▶ Focused on:
 - ▶ **Complete observational count**
 - ▶ Every Third Person Interviewed
 - ▶ This small sample of data was extrapolated broadly across observed count, county-wide

▶ 2025 Methodology

- ▶ Geographic Sampling and Enumeration
 - ▶ Focuses on:
 - ▶ **Completing as many full surveys as possible**
 - ▶ Uses known locations to strategically target which areas receive volunteers
 - ▶ **Limits use of extrapolated data** to areas without known locations, few homeless expected to be encountered, using *nearby census tracts* survey data as the base

At NO POINT are we asking people conducting surveys to provide Case Management, Housing Search Assistance, etc. This is a data collection effort to both fulfill the HUD mandated requirement and to gain a better understanding of the homeless populations in your jurisdictions!

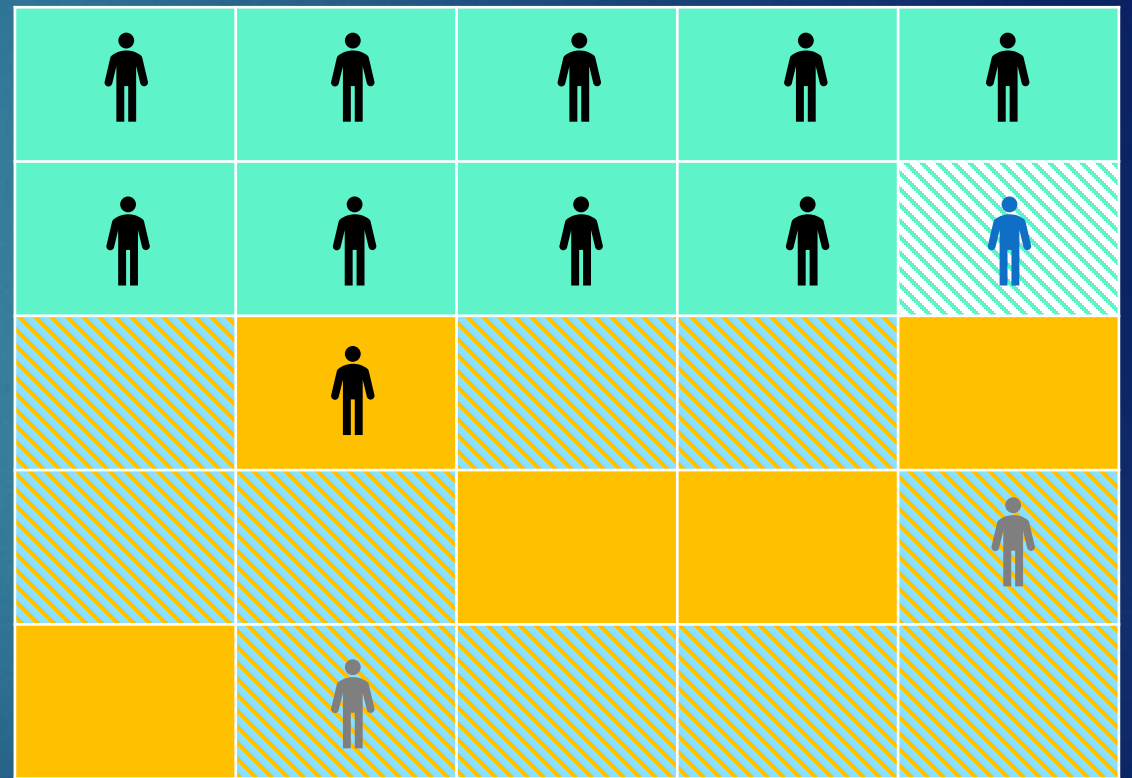
More technical details about the methodology can be found here:
<https://pointintime.info/geographic-sampling-and-enumeration/>

Estimating Final Count Totals

- For the final count, we add together:
 - The actual results of **Teal** (High Probability) Census Tracts

+

- The number for any data collected in **Orange** (Low Probability Sampling) Census Tracts that will be extrapolated to **Blue** Census Tracts based on the Low Probability (**Orange**-area) data
 - This will account for those not-observed (gray)



Pretend this grid is a map of Census Tracts

Volunteers

Volunteer Updates

10

- ▶ Have you signed up as a volunteer yet?
- ▶ Anyone who wants to volunteer must sign up through the [Volunteer Registration portal](#)
- ▶ Anyone participating in identifying Known Locations of People Experiencing Homelessness MUST register using the [Volunteer Registration portal](#)
 - ▶ <https://santaclara.pointintime.info/> is the direct link or you can scan the QR Code
- ▶ Santa Clara County Information for Volunteers available here: <https://pointintime.info/volunteer/SantaClara-county-point-in-time/>

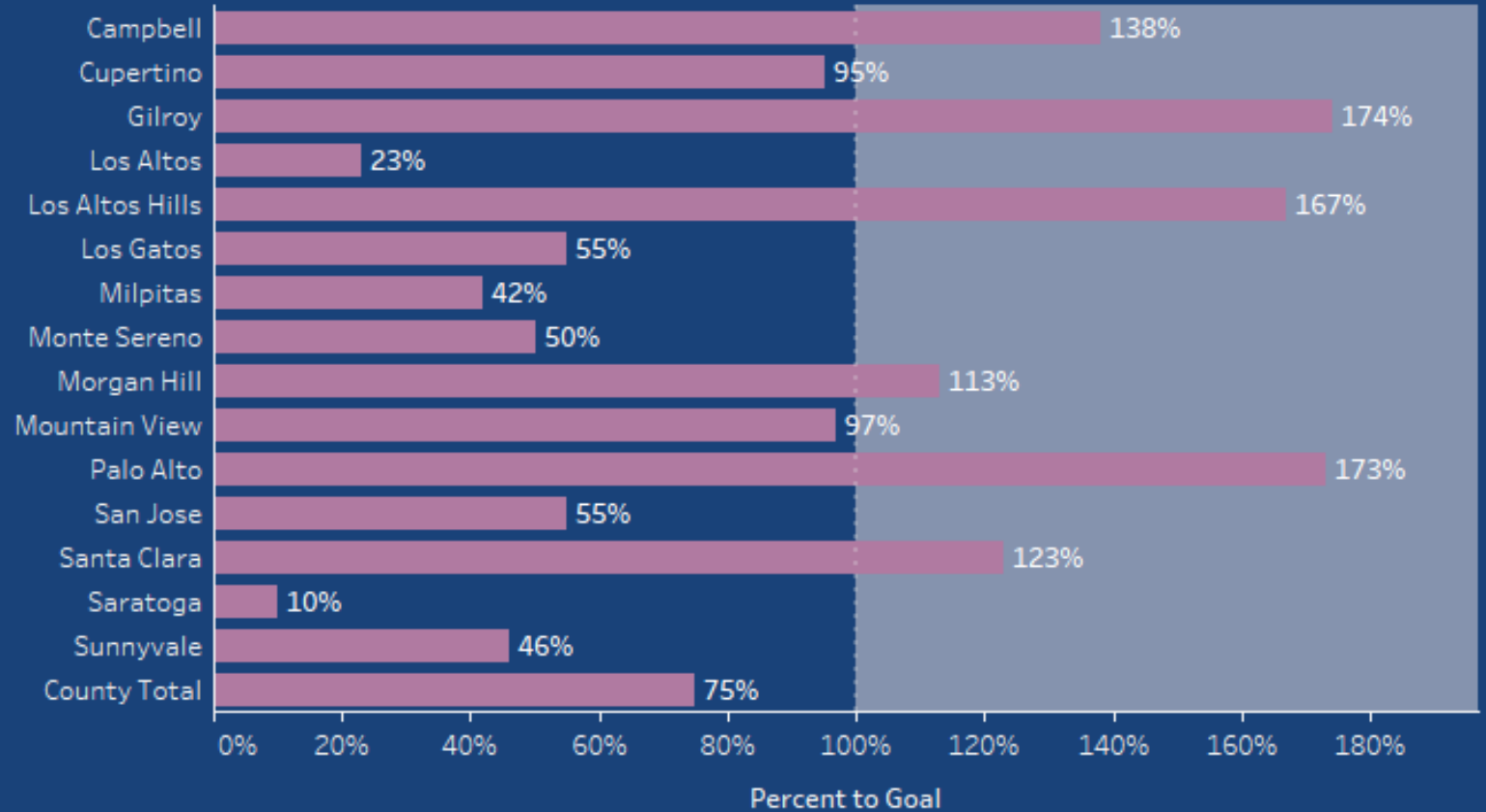
Volunteer
Registration
QR Code



Volunteer Data as of 9AM EST

Geography	Estimated Number of Volunteers Needed	Total Volunteers Registered
Campbell	16	22
Cupertino	21	20
Gilroy	19	33
Los Altos	13	3
Los Altos Hills	3	5
Los Gatos	11	6
Milpitas	26	11
Monte Sereno	2	1
Morgan Hill	15	17
Mountain View	30	29
Palo Alto	22	38
San Jose	328	182
Santa Clara	43	53
Saratoga	10	1
Sunnyvale	56	26
County Total	600	447

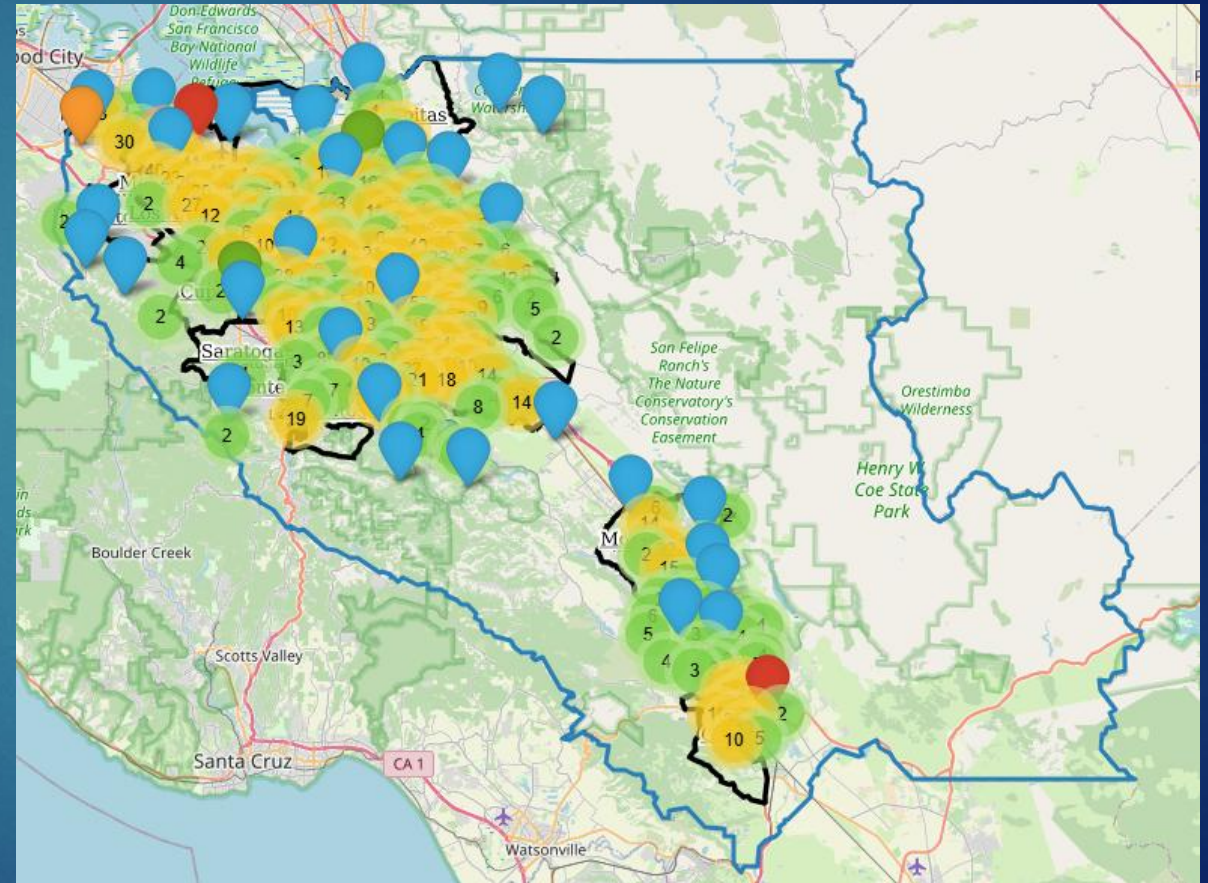
Progress Toward Volunteer Goal



Known Locations

Locations Identified & Expected Number of People Experiencing Homelessness

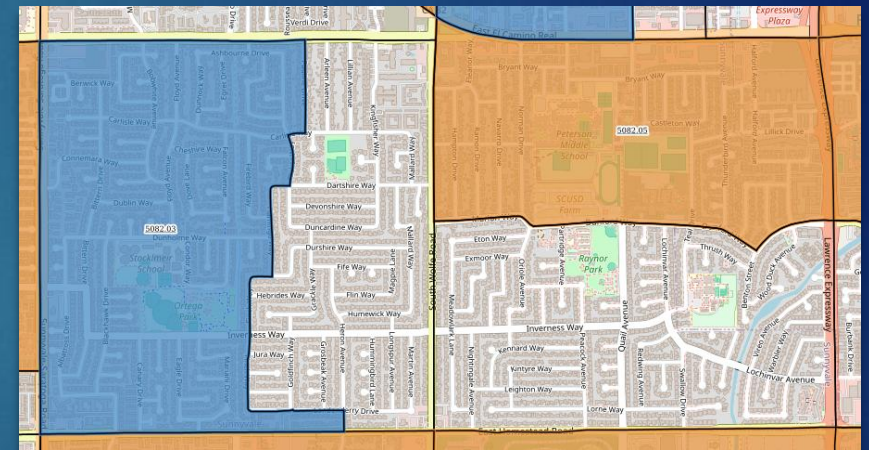
Jurisdiction	Total Locations	Total People Expected
Campbell	91	146
Cupertino	37	86
Gilroy	211	553
Los Altos	15	13
Los Gatos	34	44
Milpitas	93	158
Morgan Hill	81	226
Mountain View	339	604
Palo Alto	92	99
San Jose	1386	2864
Santa Clara	222	399
Saratoga	1	2
Sunnyvale	170	383
Unincorporated segments of Cities	193	286
Grand Total	2965	5863



Does this mean we have to interview over 5800 people in 2 days!? **NO!**

Where Will Volunteers Go Then?

- ▶ Teams of volunteers will cover census tracts assigned by the Jurisdiction Leads
- ▶ Count teams will typically be 2-4 people depending on the location
- ▶ Some locations may have more than 1 team assigned to it if the area has a larger number of people experiencing homelessness than others
- ▶ Unlike previous years, volunteers will need to be sure they canvas the entire census tract to ensure all people experiencing homelessness were counted/surveyed
- ▶ Census tracts vary in size depending on population density
 - ▶ Some areas will be easy to canvas on foot by walking
 - ▶ Some areas will require driving around the census tract to be sure it's fully covered
 - ▶ In some areas (especially sampling areas) there may be no people experiencing homelessness
- ▶ Volunteers will see their assigned location in the Counting Us App AND will have paper map copies if that's preferable to the count team



Example of Census Tracts

- Blue Tracts are for Sampling
- Orange Tracts are High Probability because they have been identified as having 7 or more people living unsheltered in that tract.

Volunteer Training Monday

15

- ▶ Volunteer Training IS STILL HAPPENING MONDAY, JANUARY 13, 2025 from 10-11:30 AM PST
- ▶ Topics included in training:
 - ▶ PIT 101: Brief overview of what PIT is and why we do this census
 - ▶ Expectations of volunteers conducting surveys
 - ▶ Cultural Humility & Trauma Informed Approaches
 - ▶ Safety
 - ▶ Using the Counting Us Mobile App and Surveys Used
 - ▶ Understanding the Logistics Canvassing and Census Tracts
- ▶ The training will be recorded and shared with volunteers unable to attend on the volunteer resources page here:
<https://pointintime.info/volunteer/santaclara-county-point-in-time/>
- ▶ The training will be recorded and shared with volunteers unable to attend on the volunteer resources page here:

<https://us02web.zoom.us/j/89324675276?pwd=ZjXI9ZfltP4turahxkFkybObN8FPIG.1>

Meeting ID: 893 2467 5276

Passcode: hudaxPZ37_



Questions?